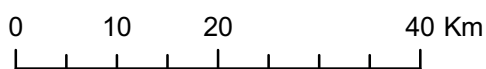
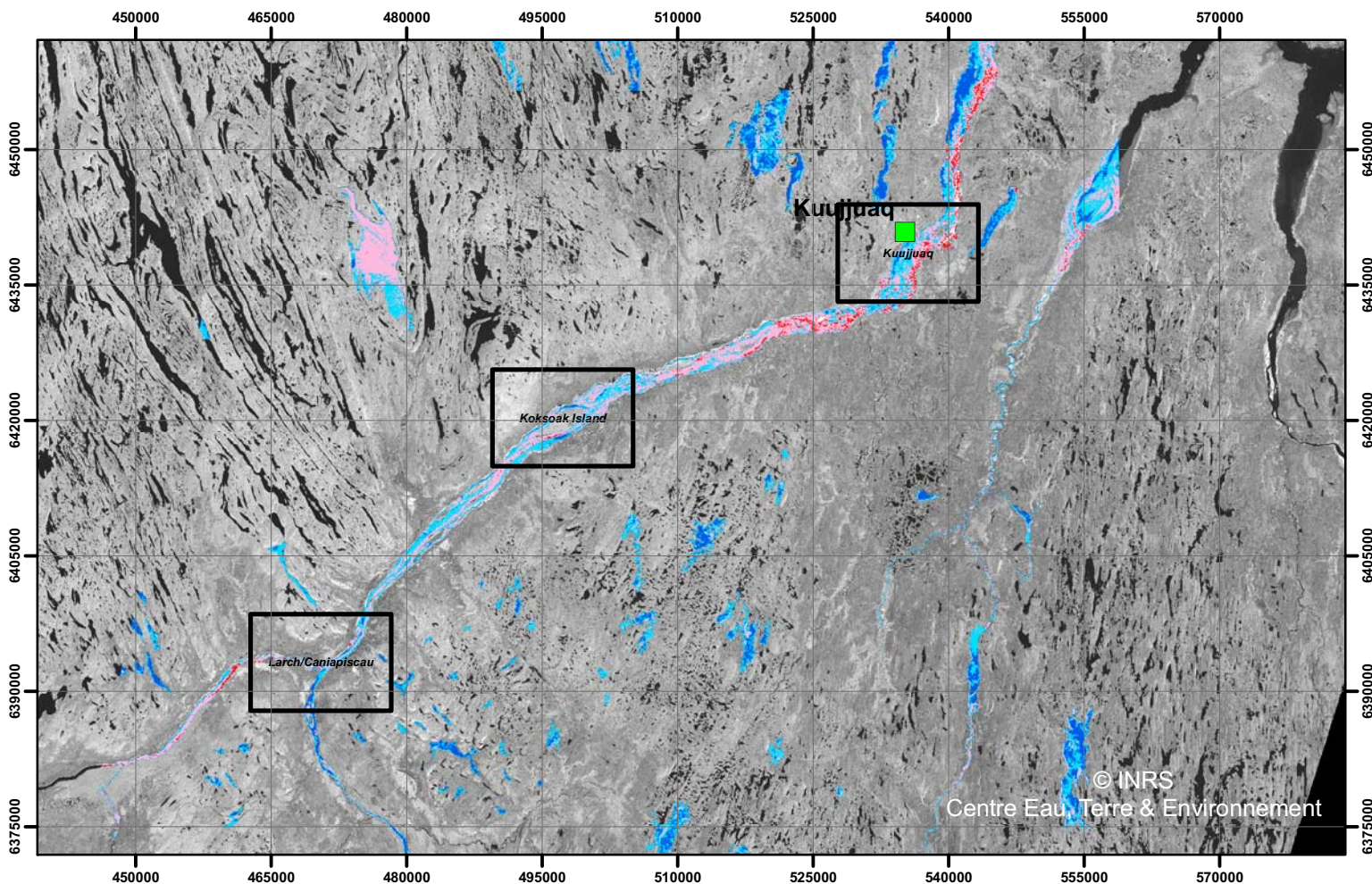


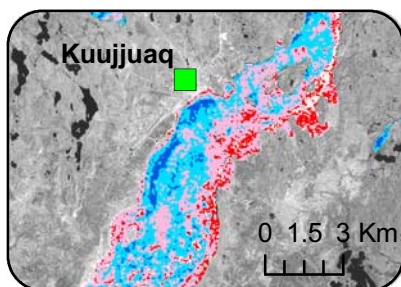
# Ice Map from RADARSAT-2 imagery - Koksoak River, November 7th 2008



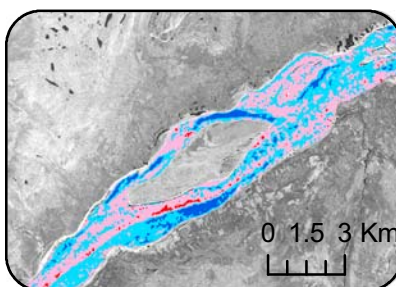
Universal Transverse Mercator  
Zone 19N



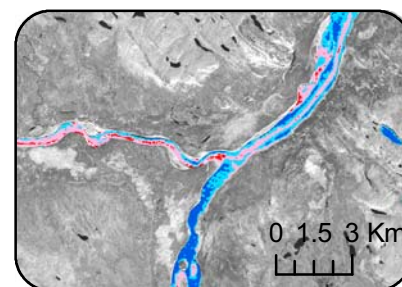
**Kuujuuaq**



**Koksoak Island**



**Larch/Caniapiscau**



- Water or clear ice
- Smooth ice
- Slightly rough ice
- Rough ice
- Very rough ice

Note : The information provided by INRS on this map is for information purposes only. Actual conditions may differ due to the update frequency. KRG or INRS shall not be held responsible for any incident or damages that may occur with regards to the provided information.

This map is produced using RADARSAT-2 imagery provided by MDA and the Canadian Space Agency through Environment Canada  
Maps are available for download at : <http://climatechange.krg.ca/kuujuuaq.html>